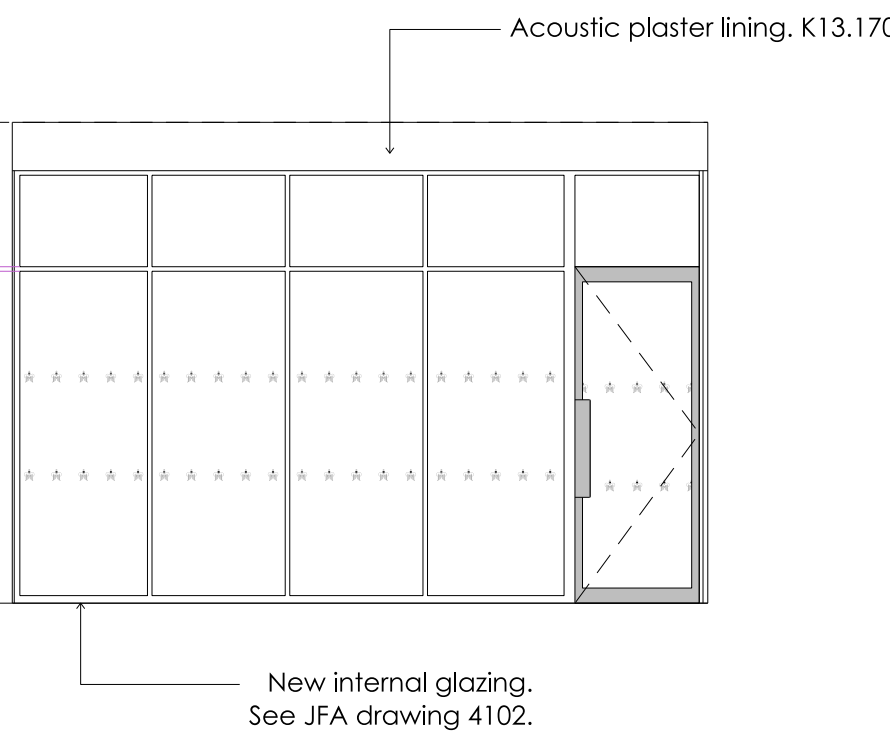
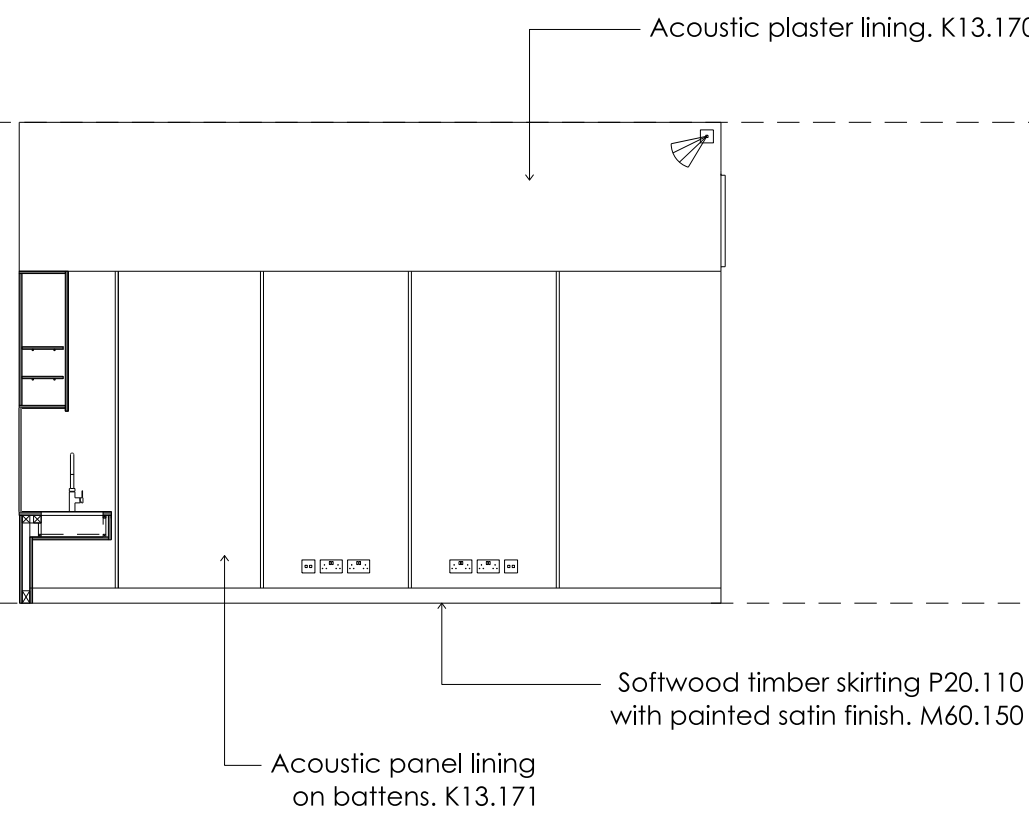
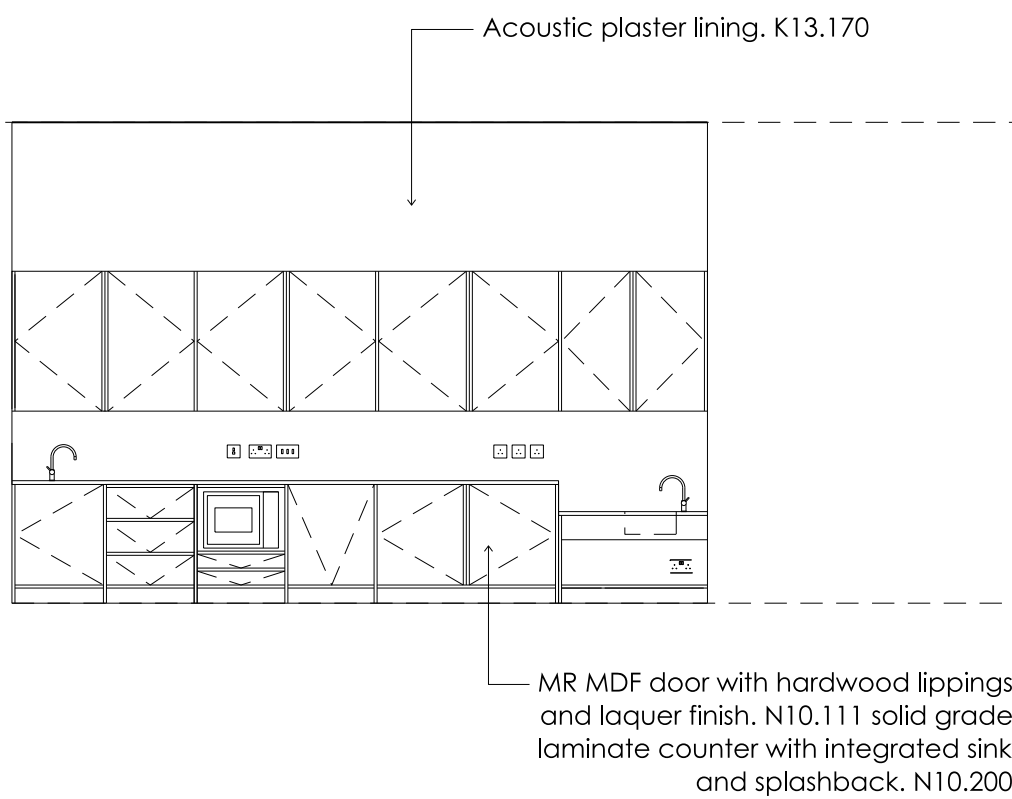
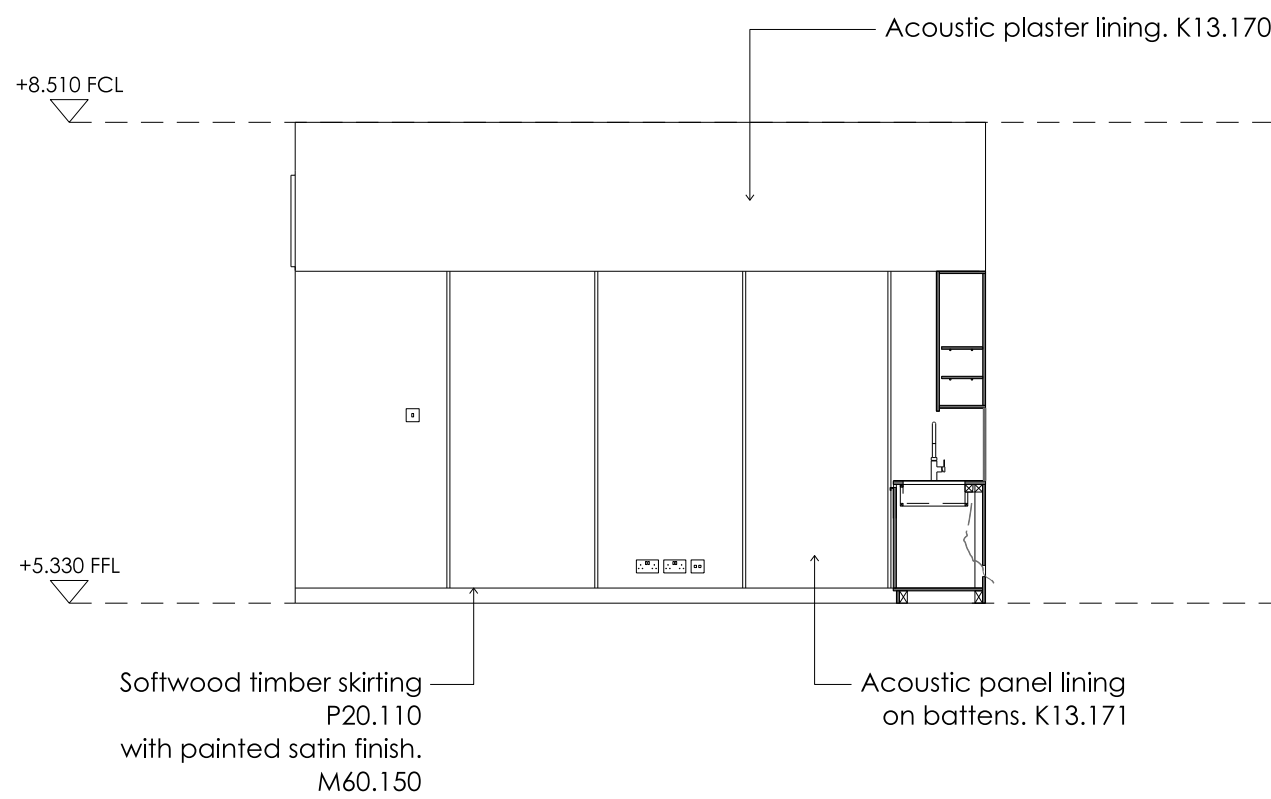


1  
3107  
Office  
Plan

2  
3107  
Office  
RCP



3  
3107  
Office  
Elevation

4  
3107  
Office  
Elevation

5  
3107  
Office  
Elevation

6  
3107  
Office  
Elevation

Key

Ceiling Finishes

- Arched acoustic plaster lining K13.170
- Acoustic plaster lining K13.170
- Existing masonry cleaned and repainted. M60.170
- MR (Moisture resistant) plasterboard K10.403 with painted finish M60.110
- Metal lining. H20.155
- Plasterboard lining K10.401 with painted finish M60.110
- Structural plywood G20.310 with decorative wood stain M60.160

Floor Finishes

- Linoleum. M50.150
- Timber (engineered boards). K20.120
- Carpet. M50.170
- Quarry tiles. M40.111
- Polished concrete topping. M10.195
- Entrance Matting. N10.300
- Metal Pedestrian Grilles L30.460
- Floor Threshold Strip. M40.805

Services

- Recessed supply slot grille.
- Recessed extract slot grille.
- Recessed extract fan.
- Recessed motorised blind.

Lighting

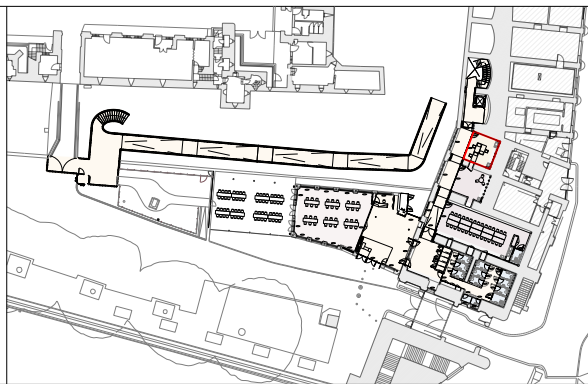
- Suspended track with track mounted spotlights.
- Surface mounted track with track mounted spotlights.
- Recessed track with track mounted spotlights.
- Concealed linear LED.
- Surface mounted downlight.
- Recessed downlight.
- Wall Light.
- Presence detector.
- Recessed uplight.
- Emergency exit signage.
- Emergency lighting.

Small Power + Accessories

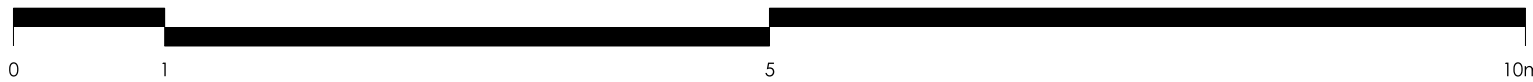
- Switched Fused Connection Unit.
- Wifi Connection Points.
- Light Switch.
- Unswitched Socket Outlet.
- Double Switch Socket Outlet.
- Grid Switch.
- Motion Detector.
- Smoke Detector.
- Smoke Detector with C/W Beacon + Sounder.
- Void Detection.
- Wifi.
- Access Panel. K13.170
- Floor Access Panel. P30.370

Tender DRAFT

Existing Fabric



General Notes:  
To be read in conjunction with Service Engineer, Structural Engineers and Heritage Architects information.  
All demolition and proposed works are to be undertaken in adherence to SMC conditions and Listed Building Consent conditions.



Jamie Fobert  
— Architects  
Rochelle, 22 Club Row  
London E2 7EY  
T: +44 (0) 207 553 6560  
mail@jamiefobertarchitects.com

Copyright of Jamie Fobert Architects Ltd 2023

Unless indicated below, this drawing is for information only.  
Do not scale. Use figured dimensions only. All dimensions to be checked on site.

Issue/Revision	Date	Rev
Stage 4	18 07 25	A
Tender Draft	24 10 25	B

Project	The Tower of London
Subject	TB Arch 4: Staff Office
Scale	1:50
Original Size	A1
Date	17 04 25
Drawing No.	TOL-JFA-01-ZZ-DW-A-3107